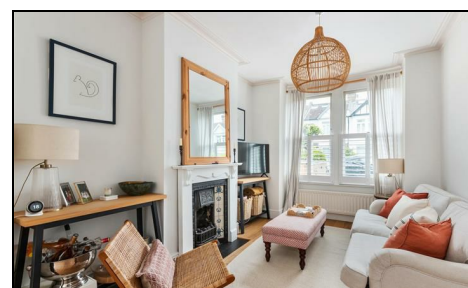


**Prince Georges Avenue
Raynes Park, SW20 8BQ**

Offers In Excess Of £950,000 Freehold



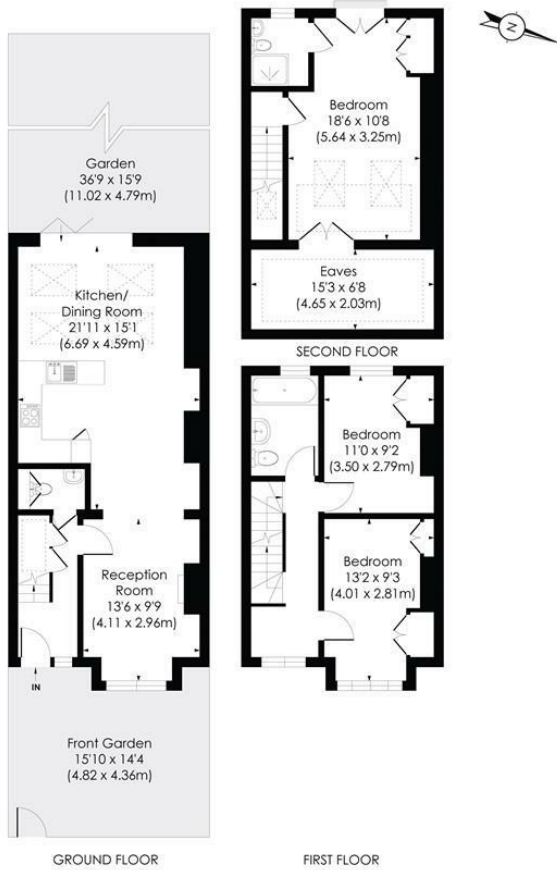
This stunning THREE DOUBLE BEDROOM, TWO BATHROOM, Edwardian Apostle House (circa 1905) has a superb West Facing garden, a spacious master bedroom with en-suite and a stunning open plan ground floor with new fitted kitchen. Located on a desirable tree lined road only 0.3 miles from Raynes Park Station and High Street.

PRINCE GEORGE'S AVENUE, SW20

Approx. Gross Internal Floor Area

1222 Sq. ft./113.53 Sq. m (Incl. Eaves)

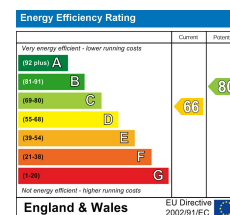
1123 Sq. ft./104.35 Sq. m (Excl. Eaves)



This floor plan has been prepared for the purpose of illustration only in accordance with the latest RICS code of measuring practice and is not to scale. All measurements and areas are approximate and whilst every effort has been made to ensure the accuracy of the plan contained here, no responsibility is taken for any error, omission or misstatement.

© Pixangle Property Marketing Ltd. info@pixangle.com Tel: 0208 870 2118

- Three Double Bedroom - Two Bathrooms
- Edwardian Apostle House Circa 1905
- Pretty West Facing Garden
- Spacious Master Bedroom With En-Suite
- Stunning Open Plan Ground Floor
- 0.3 Miles to Raynes Park Station and High Street
- Downstairs W.C
- Useful Study Area
- EPC - D
- Council Tax Band - D



For Free Mortgage Quote and Best Mortgage Rates, call Ellisons Mortgage Advisor on 0208 944 9595



Although these particulars are believed to be correct, their accuracy is not guaranteed and they do not form part of any contract.

Celebrating 30 years of successful Sales and Lettings in Merton

